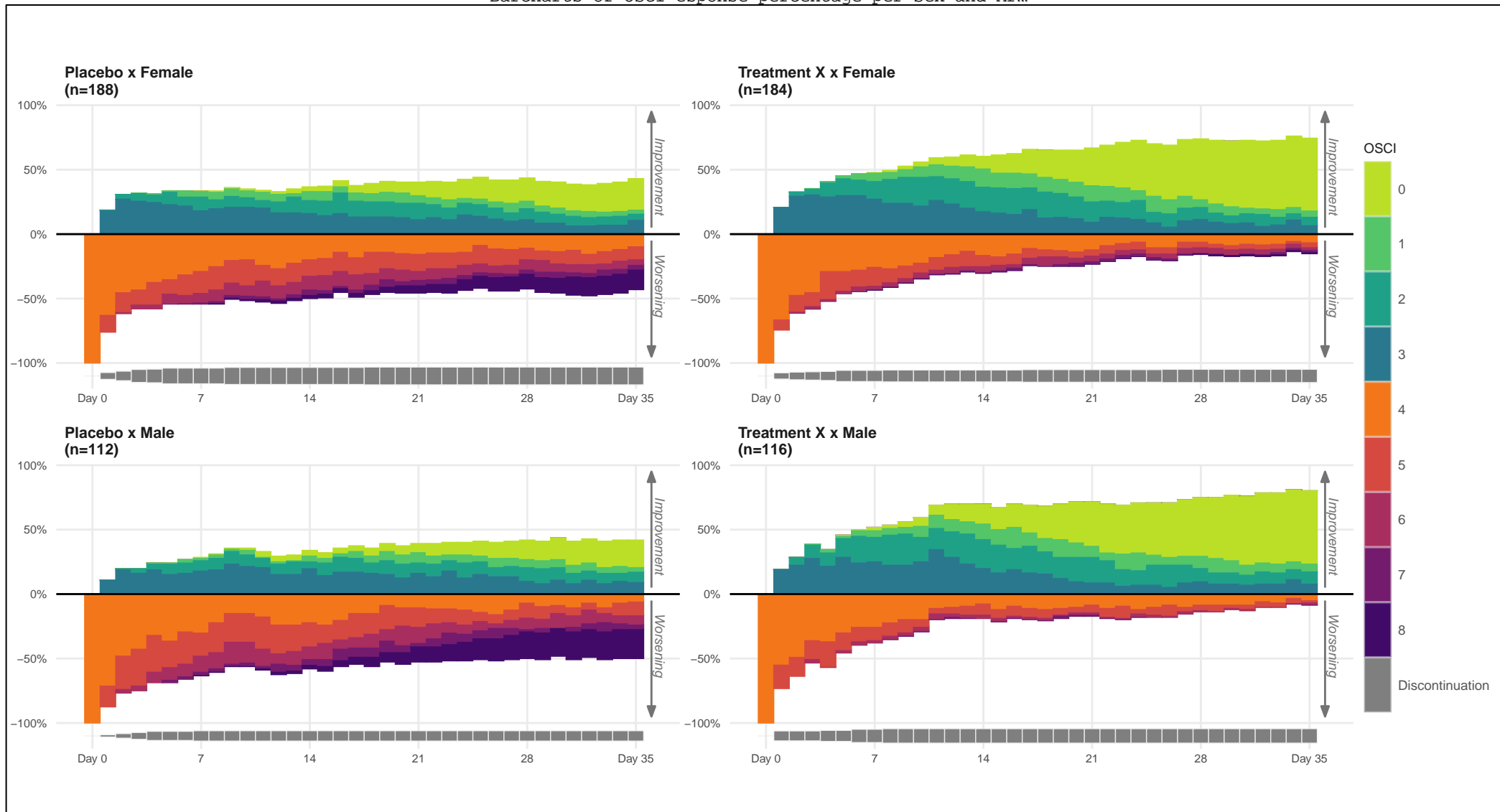


Figure 1
 Barcharts of OSCI esponse percentage per Sex and Arm



OSCI=Ordinal Scale for Improvement.
 Note: The data reflects a phase III study - active vs placebo, All patients start at OSCI=4, daily measures over 35 days.
 Note: 100% of patients starts at OSCI=4, then every improvement is associated with a bar extending above the y=0, while stability or worsening is accounted below y=0.
 Note: two colorblind-free color scales were used, the direction into which they extend (top/bottom, improvement/worsening, respectively) avoids ambiguity.